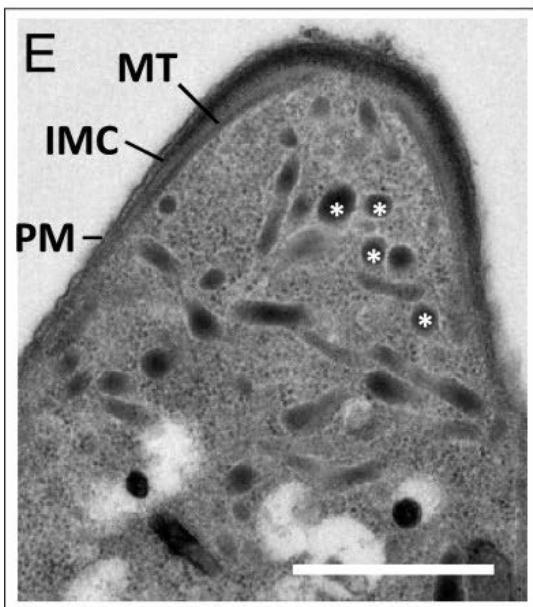
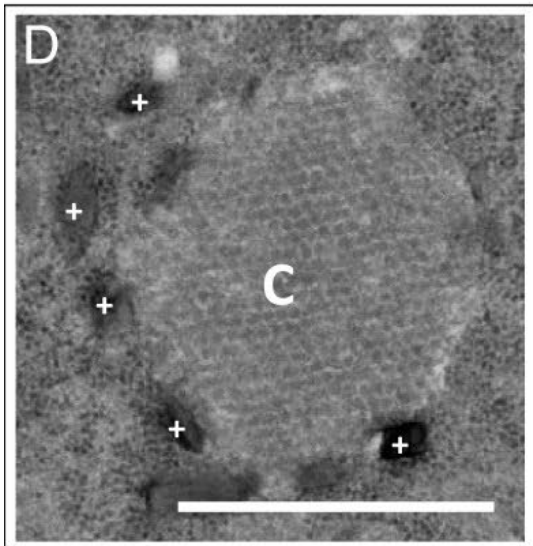
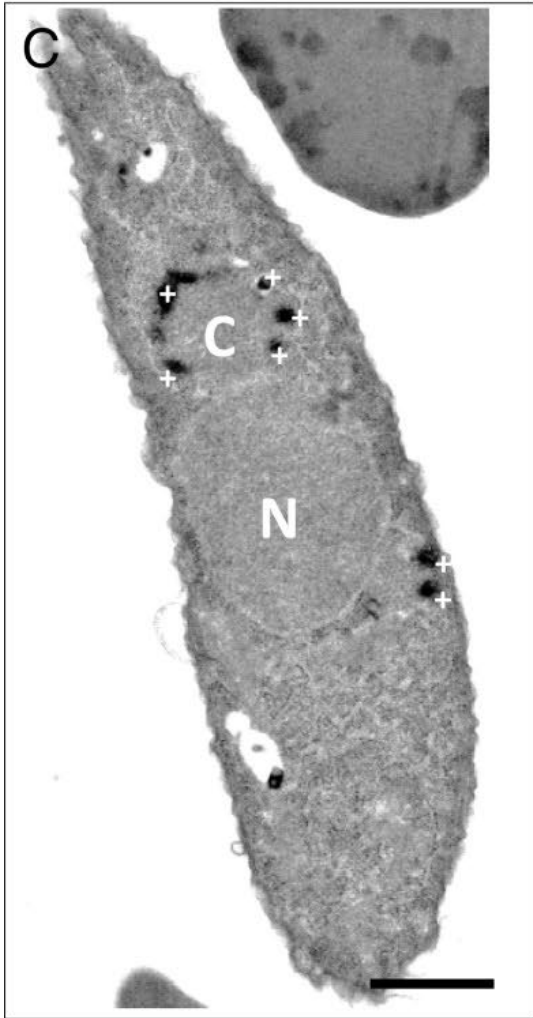
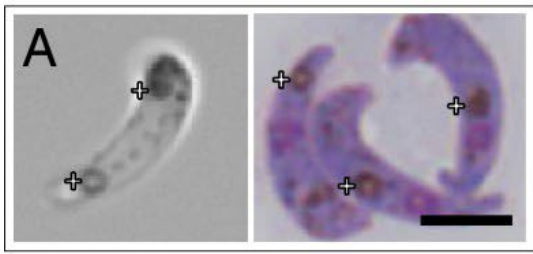


Wildtype *P. berghei* ookinetes



Transmission electron microscopy (TEM) images of *P. berghei* ookinetes

(from Santos, JM et al (2016) Proc Natl Acad Sci U S A. 2016 Jun 28; 113(26): 7183–7188)

(A) WT ookinetes with crystalloids (+) under DIC microscopy (live) and after Giemsa staining (fixed). (Scale bar: 5 μm .)
(C) Longitudinal TEM section of a WT ookinete. N, nucleus; C, crystalloid surrounded by hemozoin (+). (Scale bar: 1 μm .)
(D) TEM of WT crystalloid (C) reveals an ordered, honeycomb arrangement surrounded by hemozoin (+). (Scale bar: 1 μm .)
(E) Apical complex of a WT ookinete with micronemes (*) and a typical arrangement of subpellicular microtubules (MT), inner membrane complex (IMC), and plasmalemma (PM). (Scale bar: 1 μm .)